

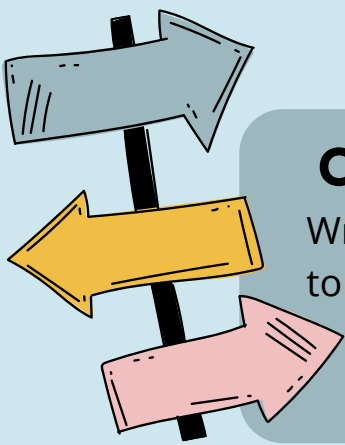
what to do before starting med @ UNE

Please take the time to read all the information and documentation that has been sent to your personal email by the School of Rural Medicine. This infographic is to be used ONLY as a guide.

Step 1

ENROL IN YOUR COURSE

Possibly the most important thing on this list so please do this as soon as possible via myUNE. You may lose your offer if not! If you are having issues, please contact 1800 818 865 (Contact Us UNE) OR the School of Rural Medicine. This is a good point to check that you know your student ID and that once you're enrolled, you can access your UNE email account (example@myune.edu.au)



CHECK OUT OUR FRESHER GUIDE

Written by students for students, this is the easiest way to get your head around life in Armidale, studying at UNE and the things you can expect this year. Check it out at this link: <https://unemsa.org/fresher-guide>

Step 2

Step 3

SORT OUT YOUR ACCOMMODATION

The Fresher Guide goes through all the types of accommodation here, but you need to apply as soon as possible to ensure you get the college/residence that you want! To apply: <https://www.une.edu.au/campus-life/une-accommodation/apply>



GET YOUR STUDENT CARD

Some accommodation relies on your Student Card, and we would prefer it if you organised this sooner rather than later. You can apply online or in person. When you get it, check that you can access the Pat O'Shane Building (The School of Rural Medicine). More info: <https://www.une.edu.au/current-students/get-started/guide-to-une/student-id>

Step 4

Step 5

JOIN THE 'UNE JMP 2022-2026' FACEBOOK GROUP

We will post regular updates and reminders for all Medical First Years at UNE so make sure you have joined!

JOIN UNEMSA!

Please sign up to our society! If you haven't worked it out already, we are going to be your best friend while studying medicine. In order to access all our events, from Social to Academic, please sign up here:

<https://unione.unelife.com.au/Clubs/unemsa>

Step 6

Step 7

IF YOU HAVE A CAR: APPLY FOR A PARKING PERMIT

If you are planning on parking at any of the colleges or on uni grounds, you will need a BLUE parking permit. Apply here: <https://www.une.edu.au/campus-life/campus-information/parking/parking-permits>



SCAN ME TO FIND ALL THE LINKS IN THIS GUIDE OR VISIT <https://linktr.ee/unemsafreshers>

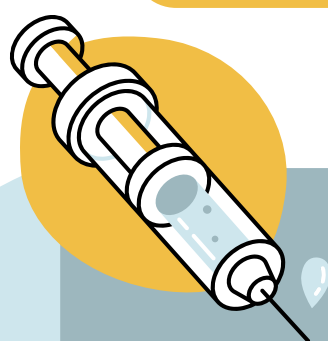
When you have properly read through all the information you have received via email in your offer package, you will realise there are a few things that you need to do before starting medicine. Referred to as the 'NSW Health Verification Requirements', you need to complete these in order to be 'ClinConnect Compliant'. That means the NSW Health system recognises that you can undertake clinical placements in NSW. Guidelines are available here:

<https://www.newcastle.edu.au/joint-medical-program/commencing-students/clinical-placement>

Step
8

APPLY FOR A NATIONAL POLICE CHECK (NPC)

NSW Health needs to know if you have a criminal record. An NPC can be obtained from either NSW Police Force (if you are a NSW resident), Australian Federal Police (if you are an interstate/international student), or CrimTrac Accredited Brokers. It costs an average of \$42-\$52. If you are an international student, you also need an NPC from your country of origin.



Step
9

ENSURE ALL YOUR IMMUNISATIONS ARE UP TO DATE

Required immunisations are in the 2022 Fresher Guide. YOU WILL NOT BE ABLE TO ENTER THE ANATOMY LAB IF YOU ARE NOT UP TO DATE. You may need to get a booster shot for certain immunisations so get a blood test if aren't sure. You need to be able to prove you are immunised via the 'Information Sheet 2 Checklist: Evidence required from category A applicants'. This can be found on page 3 of this document:

https://www.health.nsw.gov.au/immunisation/documents/occupational/student_kit.pdf. Print this out and take it to your GP.

Step
10

COMPLETE THE FOLLOWING FORMS

Please complete: 'NSW Health Form 2: Tuberculosis (TB) assessment tool' and 'NSW Health Form 3: Student Undertaking/Declaration'. These can be found on page 6 and 7 of the document in step 9.

COMPLETE THE NSW HEALTH CODE OF CONDUCT FORM

Complete the 'Code of Conduct Agreement for Students undertaking Clinical Placements Form'. This can be found here:

https://www.heti.nsw.gov.au/_data/assets/pdf_file/0010/618382/Code-of-Conduct-Declaration-Form-November-2020.pdf

Step
11

Step
12

ENSURE YOU ARE FULLY VACCINATED AGAINST COVID-19

It is a requirement to be fully vaccinated (at least 2 vaccinations) against COVID-19 in order to attend clinical placements. You must ensure your digital vaccination certificate is up to date.

APPLY FOR A WORKING WITH CHILDREN CHECK (WWCC)

Apply using this link: <https://www.service.nsw.gov.au/transaction/apply-working-children-check>. You will have to confirm your identity in person at a Service NSW.

Step
13



SCAN ME TO FIND ALL THE LINKS IN THIS GUIDE OR VISIT <https://linktr.ee/unemsafreshers>



Step
14

YOU MUST HAVE AN UP TO DATE FIRST AID CERTIFICATE WITH CPR

You must have an up-to-date WorkCover approved Provide First Aid Certificate including CPR. This must be submitted via Contact Us on askUNE. First Aid Certificates last for three years while the CPR component must be updated yearly. Link to askUNE: <https://askune.custhelp.com/app/ask>

UNEMSA will be organising a First Aid Course in late March if you cannot complete a First Aid Course before coming to Armidale.

Required certificates:

- HLTAID001 Provide cardiopulmonary resuscitation
- HLTAID002 Provide basic emergency life support
- HLTAID003 Provide first aid

Step
15

BECOME CLINCONNECT COMPLIANT

After you have completed all the documentation from steps 8-12, you will be able to send this to NSW Health in order to become ClinConnect Compliant. You should receive detailed instructions from your year manager on how to format and subject your submission so don't stress too much about this for now.

Required documentation to become ClinConnect Compliant:

- UNE Student ID
- National Police Check
- COVID-19 Vaccination Digital Certificate
- signed NSW Health Code of Conduct Agreement for Students Undertaking Clinical Placements
- completed 'Vaccination Record Card for Health Care Workers and Students' form
- completed Blood Borne Virus Student Declaration Form
- completed Undertaking/Declaration Form
- completed Tuberculosis (TB) Assessment Tool



CHECK YOUR DATES AND GET PACKING!

Step
16

Classes and Orientation will begin on the 21st of February. Until then, please continue to check all your emails for updates from the Colleges and School of Rural Medicine. Best of luck and we are all very excited to welcome you to the Joint Medical Program at UNE!

CONGRATULATIONS ON YOUR OFFER AND WELCOME TO UNE!



SCAN ME TO FIND ALL THE LINKS IN THIS GUIDE OR VISIT <https://linktr.ee/unemsafreshers>

this is not a substitute for the information provided by the School of Rural Medicine

please only use this as a guide!

feel free to contact Sophie at president@unemsa.org if you have any questions!



designed by Hannah Chow